



Commander's Message

Lt. Gen. Daniel L. Karbler

Welcome to the 2021 issue of the *Global Defender*, your guide to the U.S. Army Space and Missile Defense Command and the Joint Functional Component Command for Integrated Missile Defense.

As the commanding general of both USASMDC and JFCC IMD, I am proud to lead an outstanding team of 3,000 Soldiers, Sailors, Airmen and Civilians in 23 locations worldwide. Day in and day out, the dedicated men and women of these commands execute their no-fail mission as one team of empowered, innovative, ready and resilient professionals. While we ceaselessly pursue mission success, we never forget the People First philosophy: our people are the Army's greatest strength. By continuing to recruit, train and develop the best talent – by putting our people first – we are achieving the intellectual and cognitive overmatch needed to fight and win in today's complex security environment.

Operationally, USASMDC provides the Army and the joint force with satellite communications, space situational awareness, and missile warning and defense as the Army Service Component Command to U.S. Space Command and U.S. Strategic Command, and we protect our homeland 24/7/365 from ballistic missile attack in support of U.S. Northern Command.

Through JFCC IMD, we provide USSTRATCOM with global missile defense expertise that is essential to its strategic deterrence mission.


In force and capability development, USASMDC is responsible for concepts, experimentation, training and integration through our Space and Missile Defense Center of Excellence, as well as developing, testing and evaluating next-generation technologies through our Technical Center.

No one has a better perspective on the convergence of space and missile defense or a more nuanced view of Army air and missile defense forces and capabilities than we do here at USASMDC and JFCC IMD. We occupy strategic key terrain that sits at the integration nexus of three combatant commands, making us truly unique as the nation moves forward in this era of great power competition. The Army and the joint force will be increasingly reliant on our space and missile defense capabilities and expertise as the Army realizes the potential of multi-domain operations and develops the AimPoint Force.

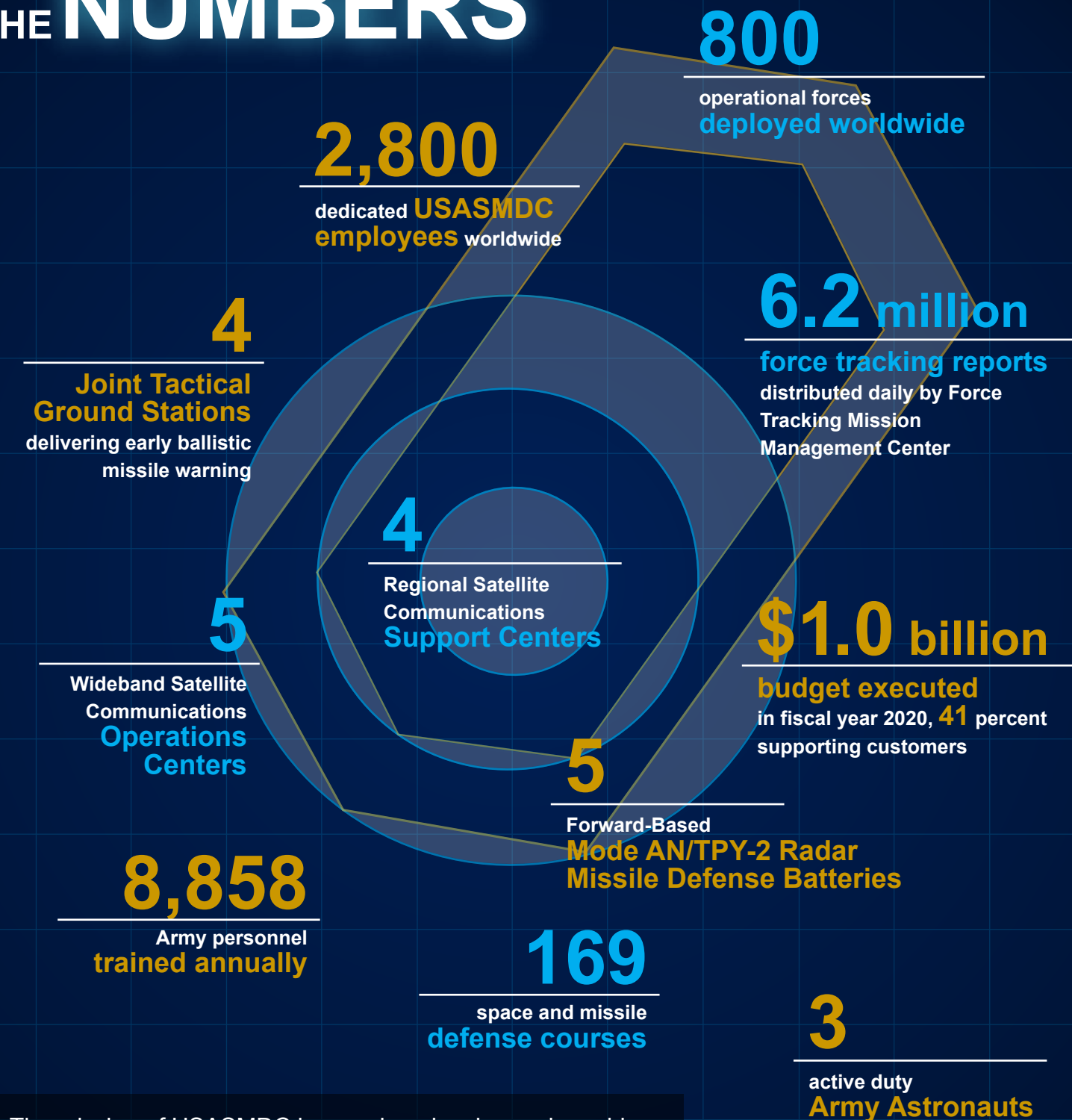
That is why we are laser-focused on integrating Army offensive and defensive capabilities from the tactical to the strategic level, from mud to space, in all domains; and we will execute our missions from competition and crisis, to conflict. Integration will provide commanders with a higher-resolution, integrated air picture and empower them to converge capabilities across all domains in a joint kill web. It will allow the joint force to mitigate single points of failure, to address capability and capacity shortfalls, and to avoid exploitable seams and gaps. It will also enable our warfighters to penetrate and disintegrate anti-access and area denial systems and to defeat advanced threats like hypersonic missiles.

I am privileged to lead and serve alongside men and women of the highest caliber at USASMDC and JFCC IMD, some of whom you will read about in these pages. Our team's commitment to protecting and defending this nation, even in the face of a global pandemic, has and always will be unwavering.

**Secure the High Ground!
Vigilant for the World!**

A global command with personnel assigned to 11 time zones at 23 worldwide locations 

SMDC BY THE NUMBERS



The mission of USASMDC is complex: develop and provide current and future global space, missile defense and high altitude capabilities to the Army, joint force, our allies and partners to enable multi-domain combat effects; enhance deterrence, assurance and detection of strategic attacks; and protect the nation.